



Large 18th century country house with separate converted barn and private access to the Norfolk broads. Norfolk.

1 / 35



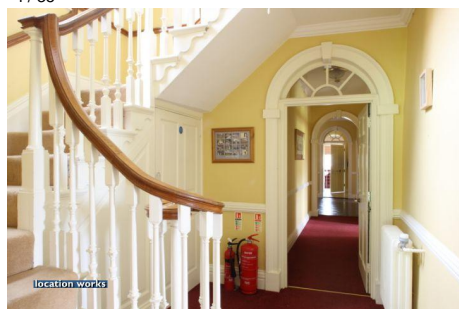
2 / 35



3 / 35



4 / 35



5 / 35



6 / 35



7 / 35



8 / 35



9 / 35





10 / 35



11 / 35



12 / 35



13 / 35



14 / 35



15 / 35



16 / 35



17 / 35



18 / 35



19 / 35



20 / 35



21 / 35



22 / 35



23 / 35



24 / 35





25 / 35



26 / 35



27 / 35



28 / 35



29 / 35



30 / 35



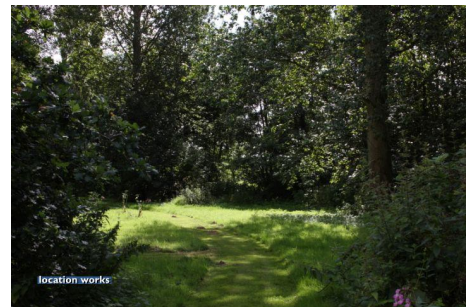
31 / 35



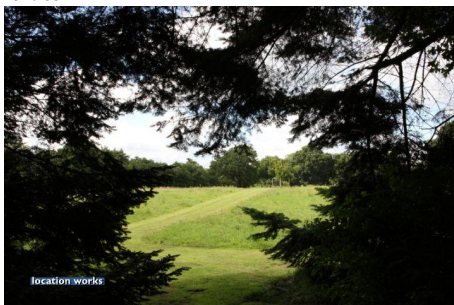
32 / 35



33 / 35



34 / 35



35 / 35

